

# ASSEMBLY MANUAL – COMPUTER SOCKETS

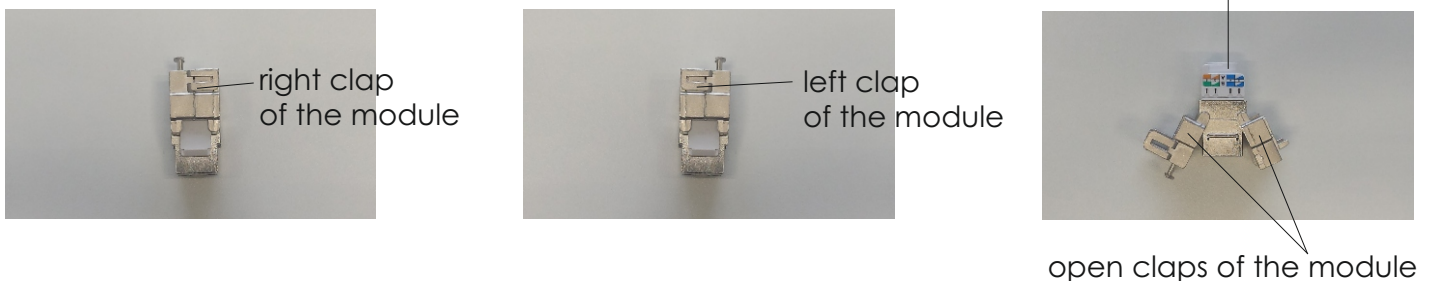
The manual concerns the following types of sockets:

| Series | Symbol of the product                           |
|--------|---|
| DECO   | DGK-1e, DGK-3, DGK-5, DGK-2, DGK-4, DGK-6, DGTK |
| FLEXI  | FGK-1e, FGK-3, FGK-5, FGK-2, FGK-4, FGK-6       |
| MINI   | MGK-1e, MGK-3, MGK-5, MGK-2, MGK-4, MGK-6       |
| TREND  | GK-1e, GK-3, GK-5, GK-2, GK-4, GK-6             |
| LOGO   | LGK-1e, LGK-3, LGK-5, LGK-2, LGK-4, LGK-6       |

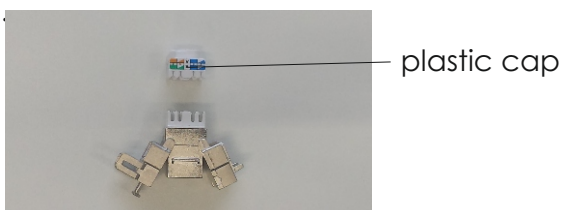
**Assembly manual on the example of the screen socket RJ45 (when it comes to a non-screen socket proceed in the same manner):**

1. Prise the clasps from both sides and open the module (Photo no. 1).
2. Remove the plastic cap with markings of the ways of assembly: A or B (Photo no. 2).
3. Strip insulation of the wire and leave 1 cm screen (Photo no. 3).
4. Lead the stripped wire through the plastic cap, leaving screen (Photo no. 4).
5. Pull the cords of the wire through notches of the plastic cap, keeping suitable colour of the chosen connection standard A or B (Photo no. 5).
6. Cut the projecting ends of the cords (Photo no. 6).
7. Insert the plastic cap into the module following the arrows directions both on the cap and on the module (Photo no. 7).
8. Close the module. This way the cap shall be pressed automatically (Photo no. 8).
9. Press the screen of the wire to the module casing with the cable tie and block it (Photo no. 9).

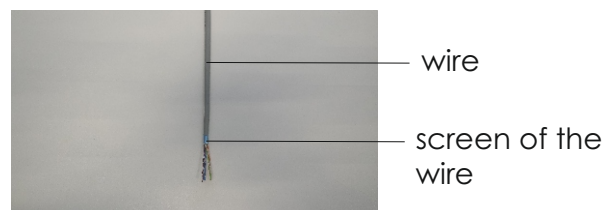
**Photo no.1**



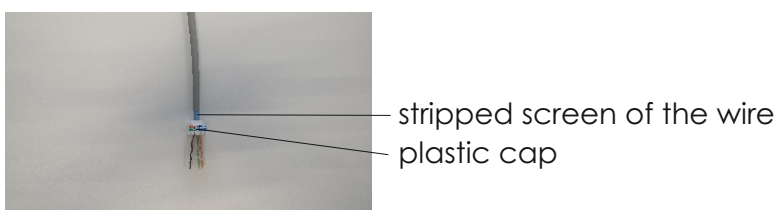
**Photo no. 2**



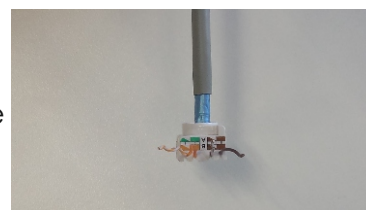
**Photo no. 3**



**Photo no. 4**



**Photo no. 5**



# ASSEMBLY MANUAL – COMPUTER SOCKETS

Photo no. 6

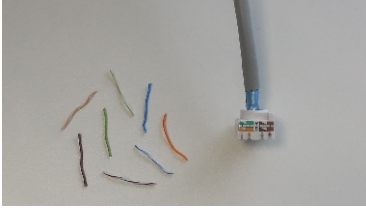
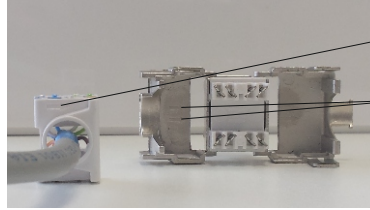


Photo no. 7



arrow on the cap  
arrows on the module

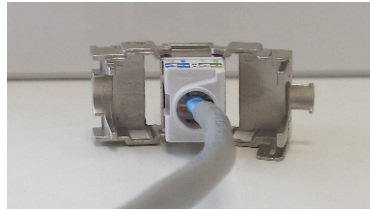


Photo no. 8



Photo no. 9



## NOTE!

Assembly shall be held by a suitably qualified person with deactivated voltage and shall meet the national safety standards